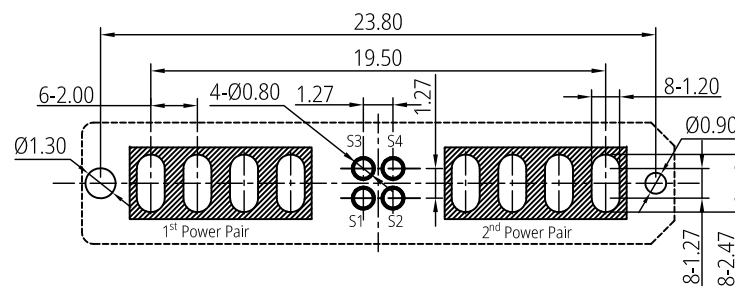
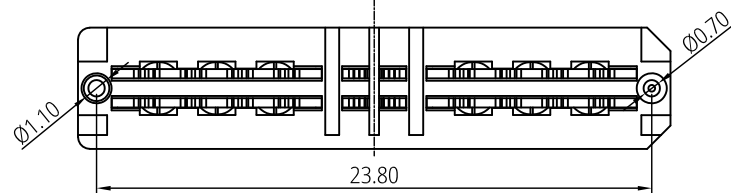
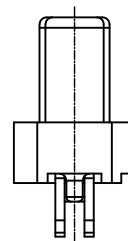
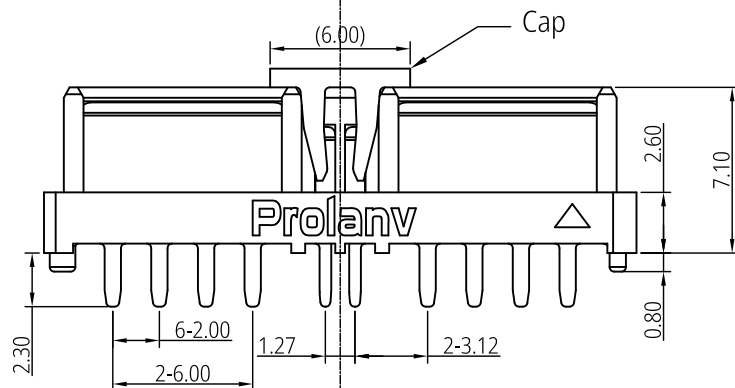


3D View

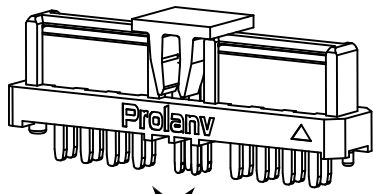
Note:

1. Material:
  - 1-1.Housing: High Temperature Thermoplastic. UL 94 V-0 black.
  - 1-2.Power Pin & Signal Pin: High Conductivity Copper Alloy.
2. Plating Specification:
  - Gold Plating on the functional area and on tails of contact, Nickel under plated.
3. Electrical Performance:
  - 3-1.Current rating: 50A/Per Power Pair, 1A/Per Signal Pin.
  - 3-2. Voltage rating: 60V DC/Power Pin, 30V DC/Signal Pin.
  - 3-3.LLCCR (Power Pin): 0.5mΩ max.(initial), 1.0mΩ max.(final).
  - 3-4.LLCCR (Signal Pin): 20mΩ max.(initial), 30mΩ max.(final).
  - 3-5.Dielectric Withstanding Voltage: 500V AC (RMS) for 60s.
  - 3-6.Insulation Resistance: 500MΩ min. @ 500V DC.
4. Mechanical Performance:
  - 4-1. Insertion force: 49N (5.0kgf) max.
  - 4-2. Withdrawal force: 4.9N (0.5kgf) min.
  - 4-3. Durability life: 2,000 cycles.
5. IR Reflow:
  - The peak temperature on board shall be maintained for 10 seconds at 260±5°C.
6. Operating temperature range: -40°C~125°C.
7. All part RoHS and Reach compliant.

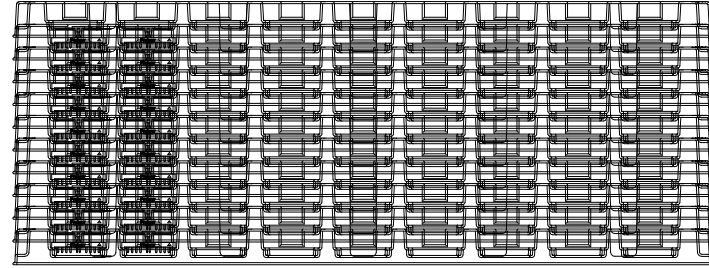
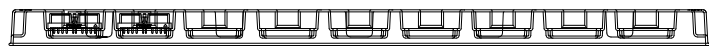
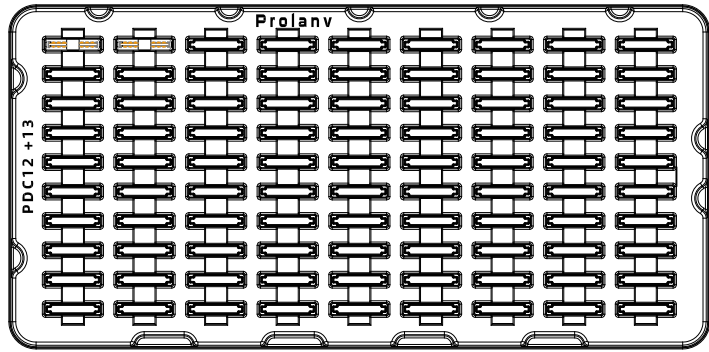


Recommended P.C.B Layout (Top View)  
Tolerance: ±0.05mm

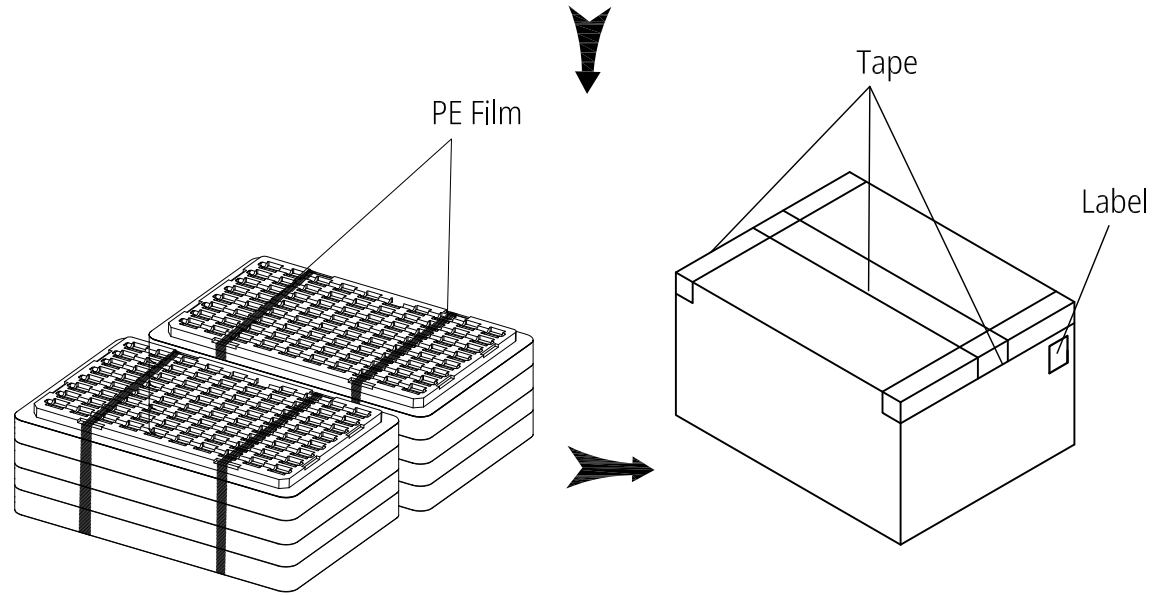
THIS DRAWING AND SPECIFICATION ARE THE PROPERTY OF Prolanv AND SHALL NOT BE COPIED OR USED WITHOUT Prolanv PERMISSION	GENERAL TOLERANCES UNLESS SPECIFIED		PART NO. PDC1310B0001	<b>Prolanv</b> <sup>®</sup>			
	X ± 0.30	X.° ± 3°					APPROVED BY Dio.Chen
	.XX ± 0.20	.X.° ± 2°	CHECKED BY Henry	DWG NO. PDC13-10			
	.XXX ± 0.10	.XX.° ± 1°	DRAWN BY Poplar				
	SIZE A4	UNITS mm[only]				SHEET 1 / 2	SCALE 1:1



90pcs/Tray



Total 2\*10 Layers



Notes:

1. Q'ty: 90Pcs/Tray, 2x10Layers=1,800 Pcs/Carton.
2. Tray Pallet size: 332\*162\*17mm.
3. Carton size: 350\*350\*155mm.

THIS DRAWING AND SPECIFICATION ARE THE PROPERTY OF Prolanv AND SHALL NOT BE COPIED OR USED WITHOUT Prolanv PERMISSION	GENERAL TOLERANCES UNLESS SPECIFIED		PART NO.	<b>Prolanv®</b>		
	X ± 0.30	X° ± 3°	PDC1310B0001			
	.XX ± 0.20	.X° ± 2°	APPROVED BY	TITLE Mini Power Male. 2PW+4S. Straight DIP Type Packaging		
	.XXX ± 0.10	.XX° ± 1°	Dio.Chen	DWG NO. P-PDC13-10		
	CUSTOMER DRAWING		CHECKED BY	DRAWN BY		
SIZE	UNITS	Henry	Poplar	SHEET SCALE REV		
A4	mm[only]				2 / 2 NA A1	